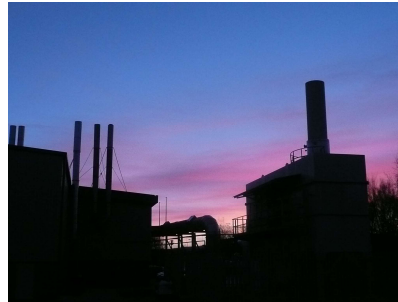


Training for Industry



The STA provides independent and impartial training to meet the needs of the members on a variety of topics related to emission monitoring.

The European Union's Medium Combustion Plant Directive (MCPD) entered into force in December 2015 and this was transposed into national legislation by 20 December 2017. The MCPD applies to existing individual Medium Combustion Plants (MCPs) in the net thermal input range 1 to <50 MWth and new aggregated plants above 1 MWth (provided that these do not qualify as a Large Combustion Plant under the Industrial Emissions Directive).



Most stationary combustion plants are in the scope of the MCPD and will be required to register and report emissions to the Environment Agency, types of plants under the MCPD but not limited to include boilers, engines and turbines.

Course Content

1. What is the MCPD? Frequency of monitoring
2. How to register your plant
3. MCERTS overview and what is required
4. Monitoring approach
5. Sampling locations
6. Principles of gas sampling
7. Principles of particulate monitoring
8. Emission monitoring equipment overview
9. SO₂ Emissions reporting based on sulphur content of fuels
10. Expressing uncertainty of measurement

Course duration: One day online course starting at 9.30am via Microsoft Teams.

Who should attend

This course is aimed primarily for operators, service providers, emission monitoring personal undertaking service, maintenance and emission reporting of boilers, engines and turbines.

As the STA is a non-profit making organisation and therefore all courses are run at cost to the membership. Costs and dates of training courses are available from <http://www.s-t-a.org/training>.

Contact Samantha for details (sam@s-t-a.org)

Medium Combustion Plant Directive and Specified Generator Regulations

For more information please call 01462 457535 or visit www.s-t-a.org